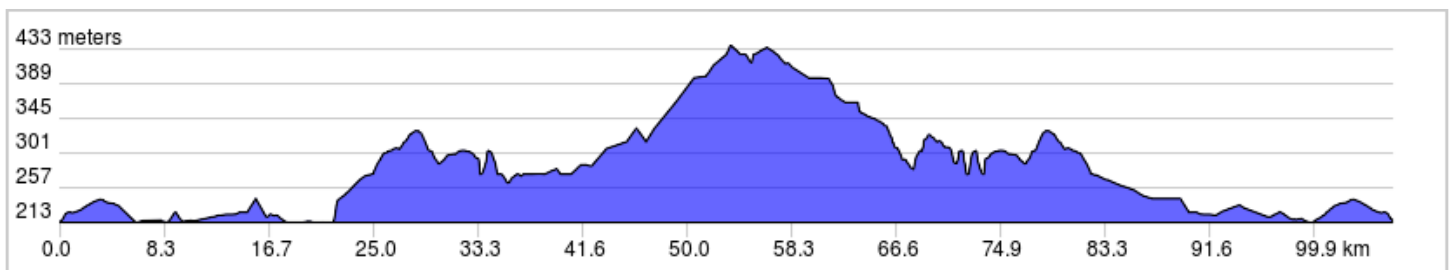
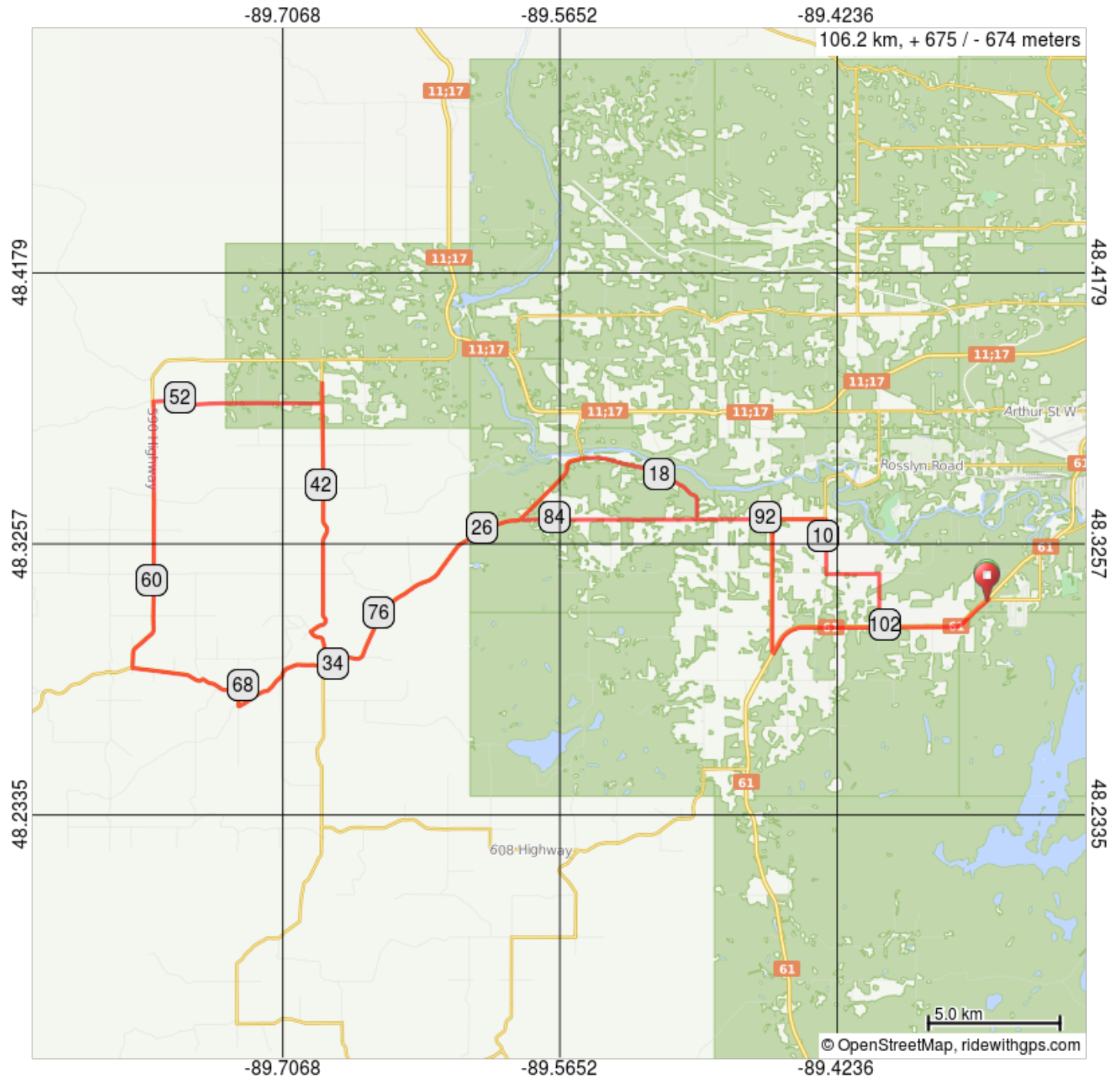


Touring: Century ride 106 km



Park at Neebing Hotel

Same route as the 160 km except at the end turn left on to Hwy 61 rather than adding the 26 kms out and back from the long course.



Touring: Century ride 106 km

0.0	0.0	▀	Start of route
0.1	0.1	→	R onto Hwy 61 S
4.6	4.5	→	R onto Gillespie Rd
6.6	2.0	←	L onto Candy Mountain Dr
8.6	2.0	→	R onto Hanna Rd
10.7	2.1	←	L onto ON-130 S
12.8	2.0	↑	Continue onto Barrie Dr
15.6	2.9	→	R onto River Rd
21.1	5.5	↑	Continue straight onto ON-588
34.5	13.4	→	R onto ON-595 N
36.1	1.7	→	R to stay on ON-595 N
46.7	10.6	→	R onto Cronk Rd
53.1	6.4	←	L onto ON-590 S
63.5	10.4	←	L onto ON-588 E

63.5 kilometers. +464/-313 meters

82.6	19.1	→	R onto Barrie Dr
92.1	9.5	→	R onto ON-130 S
97.2	5.1	←	L onto Hwy 61 N/ON-61 N (signs for Thunder Bay)
106.2	9.0	▀	End of route

42.6 kilometers. +50/-105 meters